

UK News and Festivals

Warwick has been a major centre for early music for many years, with St Mary's Church much loved by audiences and musicians.

Leamington Music's current winter season, launched by Emma Kirkby and London Baroque, continues with Ex Cathedra (13 December Christmas Concert), London Handel Players (31 January), a Handel feast (14 February) and Stile Antico (13 March).

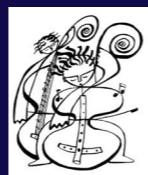
Visit www.leamingtonmusic.org
01926 776438.



June 21, 2011, London – Tarisio, the online auction house for fine instruments, sold the 'Lady Blunt' Stradivarius violin of 1721 for a world-record price of £9,808,000 (\$15,894,000) at their June 20 auction, over 4 times the previous auction record for a Stradivari violin. It was bought by an anonymous bidder after extremely active bidding. 100% of proceeds from the sale will go to aid Japan through the Nippon Foundation's Northeastern Japan Earthquake and Tsunami Relief Fund.

Check out the back cover of this magazine to read about the amazing 0% commission offer available exclusively for *Musica Antiqua* readers.

European Union Baroque Orchestra



A Seasonal Celebration
Sunday 18 December at 6pm,
Church of St John the Evangelist, Oxford



Friday 18 May, 7.30pm
St. John's, Smith Square
EUROPEAN UNION
Lully: *Le Bourgeois gentilhomme* - suite
Biber: *Battalia*
Cabanilles: *Suite Imperial*
Corelli: *Concerto grosso, Op.6, No.4*
Handel: *Concerto grosso, Op.6, No.1*
Avison/Scarlatti: *Concerto No.9*
Boccherini: *La musica notturna di Madrid*



Le Concert des Nations
Jordi Savall director

Lufthansa Festival of Baroque Music 2012

Thursday 24 May, 7.30pm
Westminster Abbey
FROM HARMONY, FROM HEAVENLY HARMONY
Bach: *Singet dem Herrn ein neues Lied*
Handel: *Silete venti*
Handel: *Ode for St Cecilia's Day*

Choir of Westminster Abbey
St. James's Baroque
James O'Donnell conductor



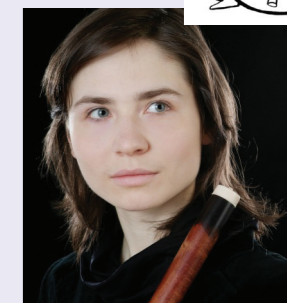
www.lufthansafestival.org.uk

YORK EARLY MUSIC FESTIVAL

CHRISTMAS FESTIVAL
Wednesday 30 November – Saturday 10 December 2011

Box Office: 01904 658338, Web: www.ncem.co.uk
Tickets: £5.00 - £25.00

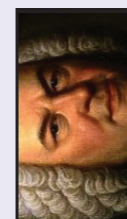
Early music specialists from across the UK celebrate some of the glorious music of Christmas – from the Renaissance through to the present day in York. Guest artists include The Cardinal's Musick, Brecon Baroque directed by Rachel Podger, The Society of Strange and Ancient Instruments, Sirinu and The Ebor Singers, The Carnival Band and Jogleasa.



EUBO Development Trust prize at the MA International Competition was awarded to ANNE FREITAG, traverso.



The New Dutch Academy (NDA), established in 2002, is an international award winning orchestra, specialising in early music. The NDA is known for its engaging and dynamic performances and particularly for bringing newly re-discovered 18th century works onto the concert platform. The NDA is based in The Hague, The Netherlands, and has an exciting line up of concerts this season. Check out our performance calendar, or their website for more details: www.newdutchacademy.nl



Thomanerchor 800 2012

In March 2012, one of the world's most important musical institutions celebrates the 800th anniversary of its foundation – Leipzig's Thomanerchor (St. Thomas Boys Choir). Over the next year we shall be featuring the choir, its history, how it operates and the important part the Thomanerchor will play at Leipzig and through its numerous national and international tours in future.

www.bachlive.co.uk

The London Bach Society
The UK's premier Bach Society. Founded 1946.



Now in its fifth year, the RCM's International Festival of Viols is firmly established as one of the leading early music events in the UK, taking in concerts, masterclasses and lectures, as well as exhibitions of instruments and bows.

This year's special guests included legendary Dutch gambist Wieland Kuijken, Martin Zeller, viol consort Fretwork, Lucy Robinson, Benjamin Hebbert and Tilman Muthesius. The stunning 'Kessler Viol' collection was also on display.

The festival was dedicated to the memory of Richard Campbell, a leading viola da gamba player and founding member of Fretwork.

www.rcm.ac.uk



RCM
LONDON

